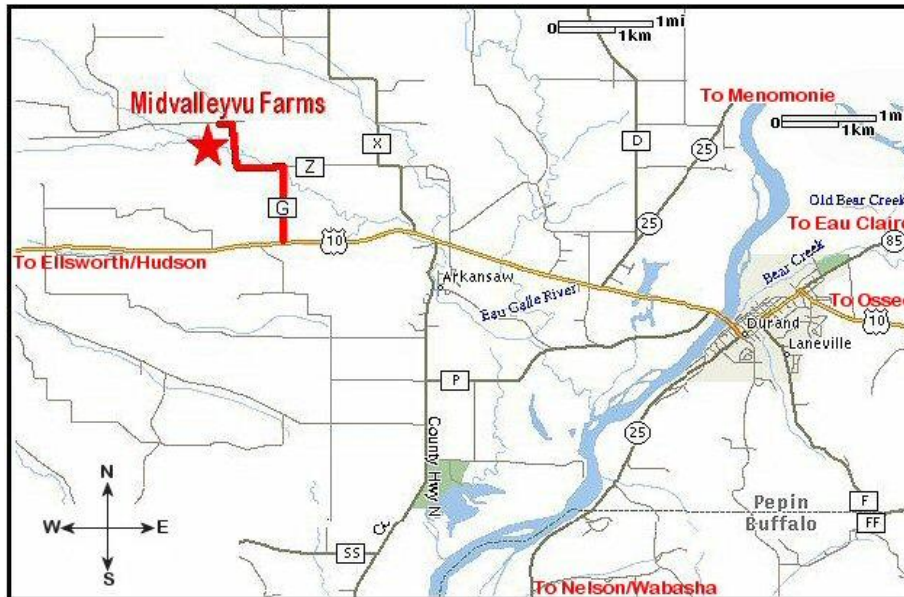


## From Wabasha, MN

We're about 25 miles from Wabasha, MN.

- From Wabasha follow MN-60 to W-25.
- You will cross the Mississippi River Bridge and continue on through the town of Nelson.
- Just north of Nelson Hwy. 25 will turn to the right (north). Continue on approx. 12 miles to Durand.
- When you come to the stop light in Durand you'll need to turn left to follow Hwy 10 to the West. You'll go through one more stop light then will cross over the Chippewa River Bridge.



- Continue on Hwy 10 West for another 5 miles to County Road G.
- Turn Right on G and drive one mile to the Stop Sign.
- At the Stop Sign you will see a sign for our farm directly in front of you. You will turn left on County Road Z and continue for 1 more mile. We're the large farm on the left.

